

„Ochrona owadów w Polsce – Badania entomologiczne a obecna sytuacja prawna i organizacyjna ochrony przyrody”. Zwierzyniec, 3–5 lipca 2006. Pol. Tow. Entomol., Poznań: 21–22.

BERNARD R., SAMOŁĄG J. 1997. Analysis of the emergence of *Aeshna affinis* VANDER LINDEN, 1823 in the vicinity of Poznań, western Poland (Odonata, Aeshnidae). Opusc. zool. Flumin., 153: 1–12.

BRAUNER O. 2005. Vorkommen, Entwicklung und Verbreitung von *Aeshna affinis* in Brandenburg (Odonata: Aeshnidae). Libellula, 24: 191–219.

OTT J. 2007. The expansion of Mediterranean Dragonflies in Europe as an indicator of climatic changes – Effects on protected species and possible consequences for the NATURA 2000 Web. [w:] Secretariat of the Convention on Biological Diversity (2007). Emerging Issues for Biodiversity Conservation in a Changing Climate. Abstracts of Poster Presentations at the 12th Meeting of the Subsidiary Body on Scientific, Technical and Technological Advice of the Convention on Biological Diversity. Montreal, Technical Series, 29: 22–24.

Rozporządzenie Ministra Środowiska z dnia 28 września 2004 r. w sprawie gatunków dziko występujących zwierząt objętych ochroną. Dz. U. Nr 220, poz. 2237.

SAHLÉN G., BERNARD R., RIVERA A.C., KETELAAR R., SUHLING F. 2004. Critical species of Odonata in Europe. Int. J. of Odonatol., 7(2): 385–398.

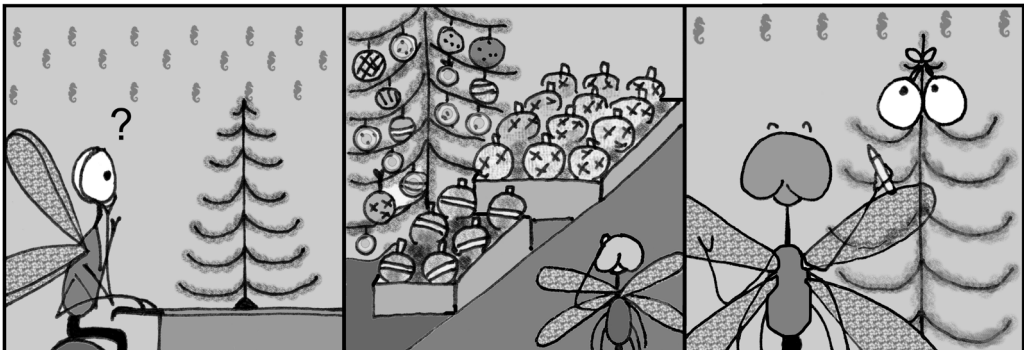
Summary

New records of six protected or/and rare dragonfly species (*Leucorrhinia caudalis*, *L. albifrons*, *Cordulegaster boltonii*, *Erythromma lindeni*, *Aeshna juncea* and *A. affinis*) from western Poland have been described. The characterisation of habitats includes short remarks to the hydrological situation with regard to changing climate followed by fluctuations of water levels. The possible consequences for the habitat quality and for the dragonfly species are discussed.

Key Words. Expansion, Mediterranean species, West Siberian species, habitat quality.

Przygody ważki z Lublina: Choinka

Adventures of the dragonfly from Lublin: Christmas tree



rys. Edyta Buczyńska